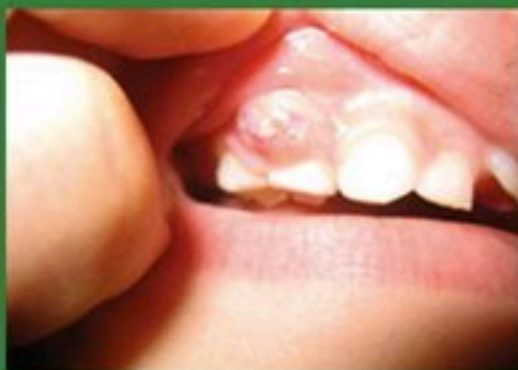


Abscessed Tooth

When a localized infection occurs in association with a tooth it is called a dental abscess. A tooth may abscess when it has untreated dental decay, did not respond well to dental treatment or has had trauma. Presentations of an abscess range from localized swelling or a pimple on the gum, to being detectable only on an x-ray. The child may experience fever, swelling or mobility of the infected tooth.



In specific cases, once an abscess is diagnosed your child may be placed on an antibiotic. The antibiotic will not cure the infection. The source of the infection, which is the tooth, must be addressed. Recommended treatment for abscessed primary (baby) teeth is dental extraction. Permanent teeth with diagnosed abscesses will be referred to an Endodontist for root canal therapy.